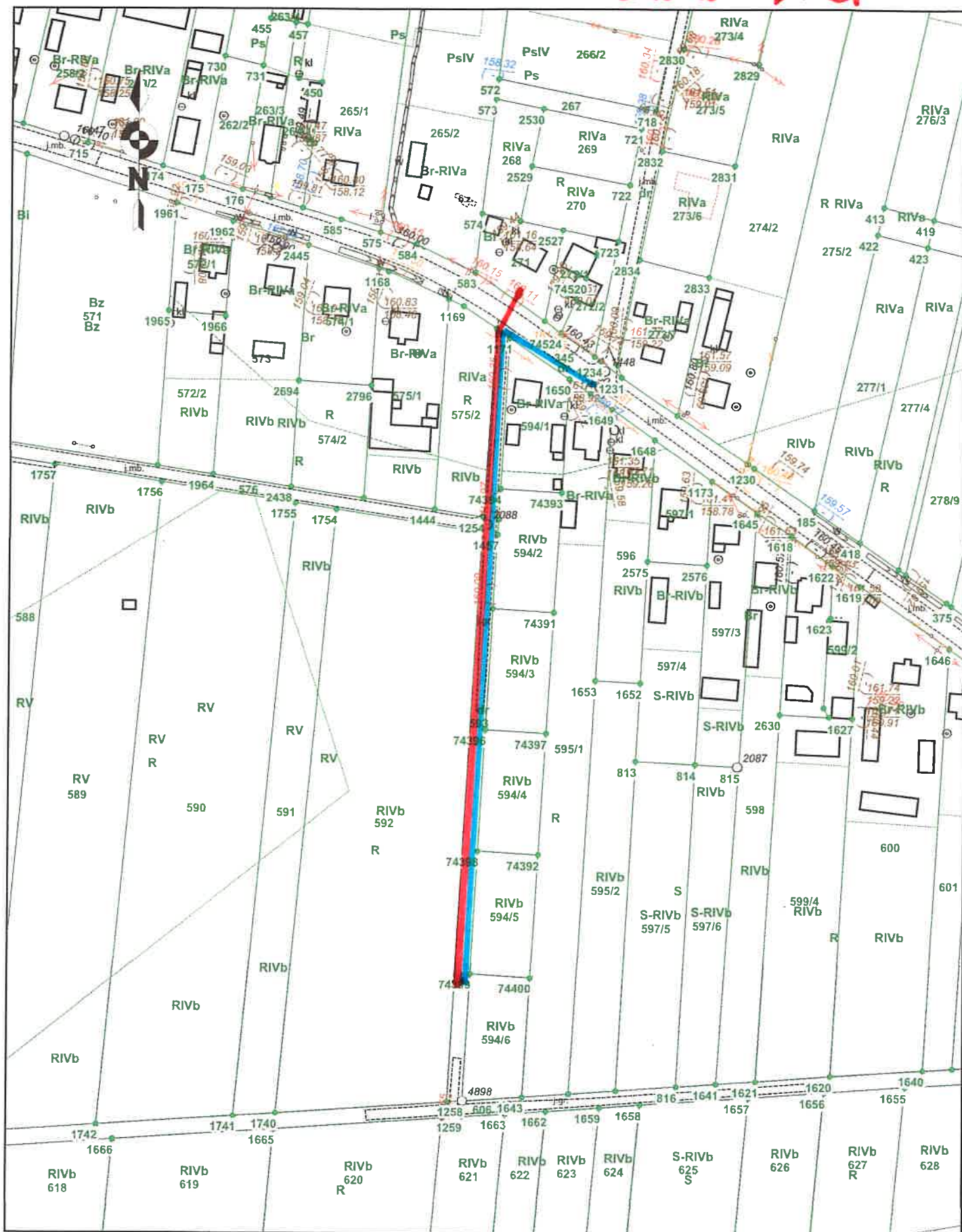


Mapa

Skala 1:2000

Zadanie 1-KA2Y

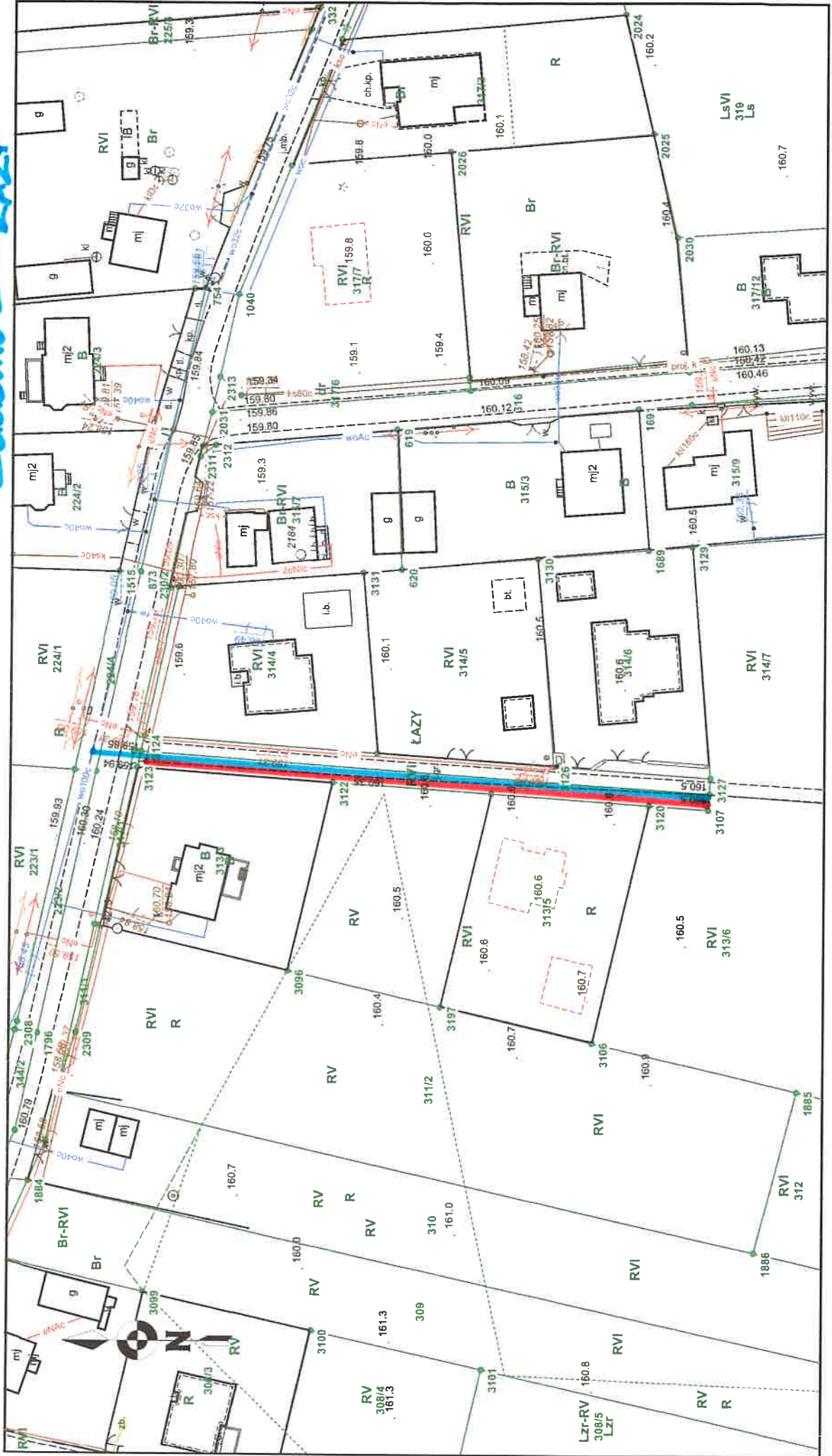


kan. ——— - dł. 270 m.  
wod. ——— - dł. 300 m

Mapa

Skala 1:1000

Zadanie 2 - LA24



kan. - - - - - 105 m.  
wod. - - - - - 115 m.

Mapa

Skala 1:1000

Zadanie 3-ROLE

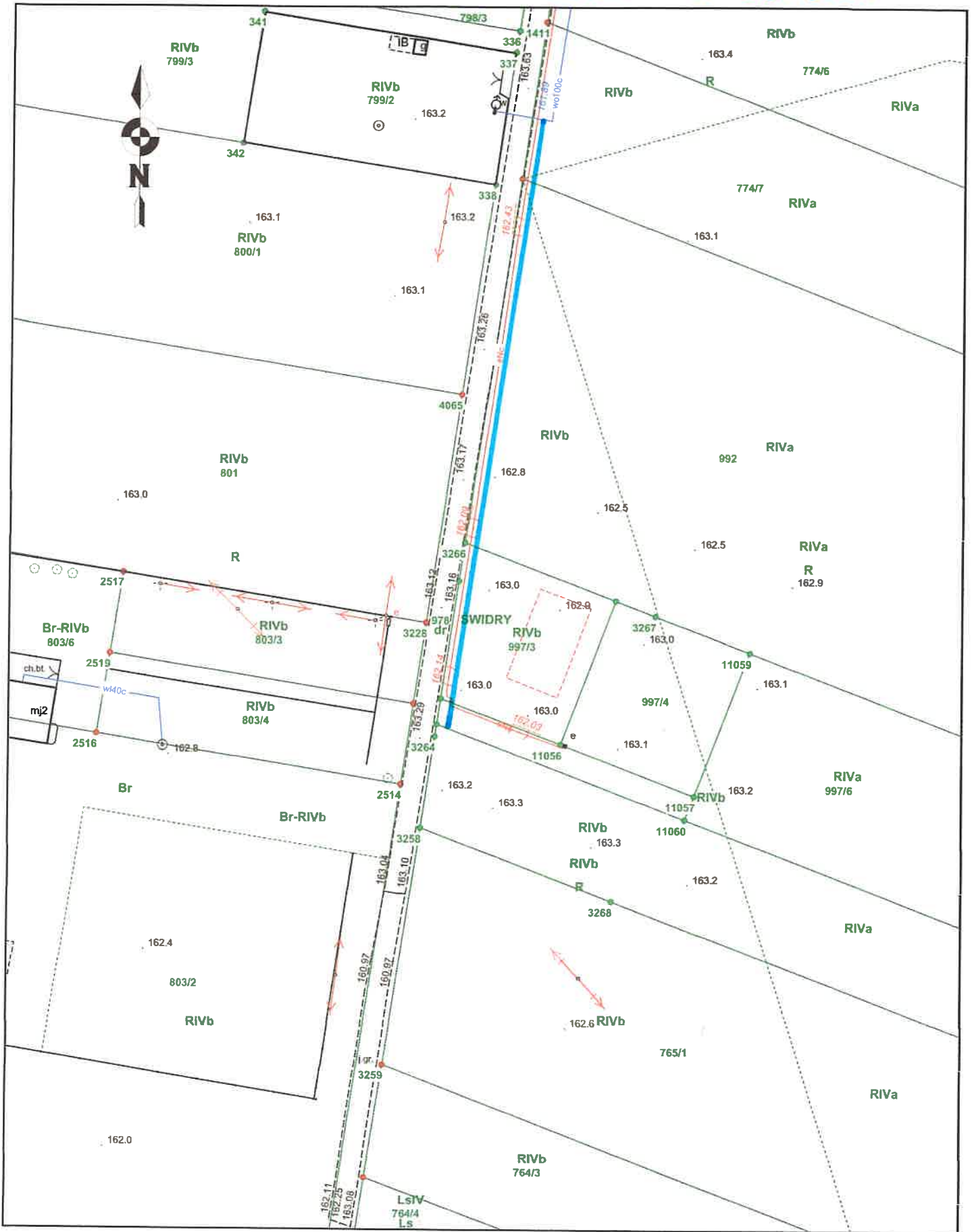


— dt. 45 m.

Mapa

Skala 1:1000

Zadanie 4-SWIDRY

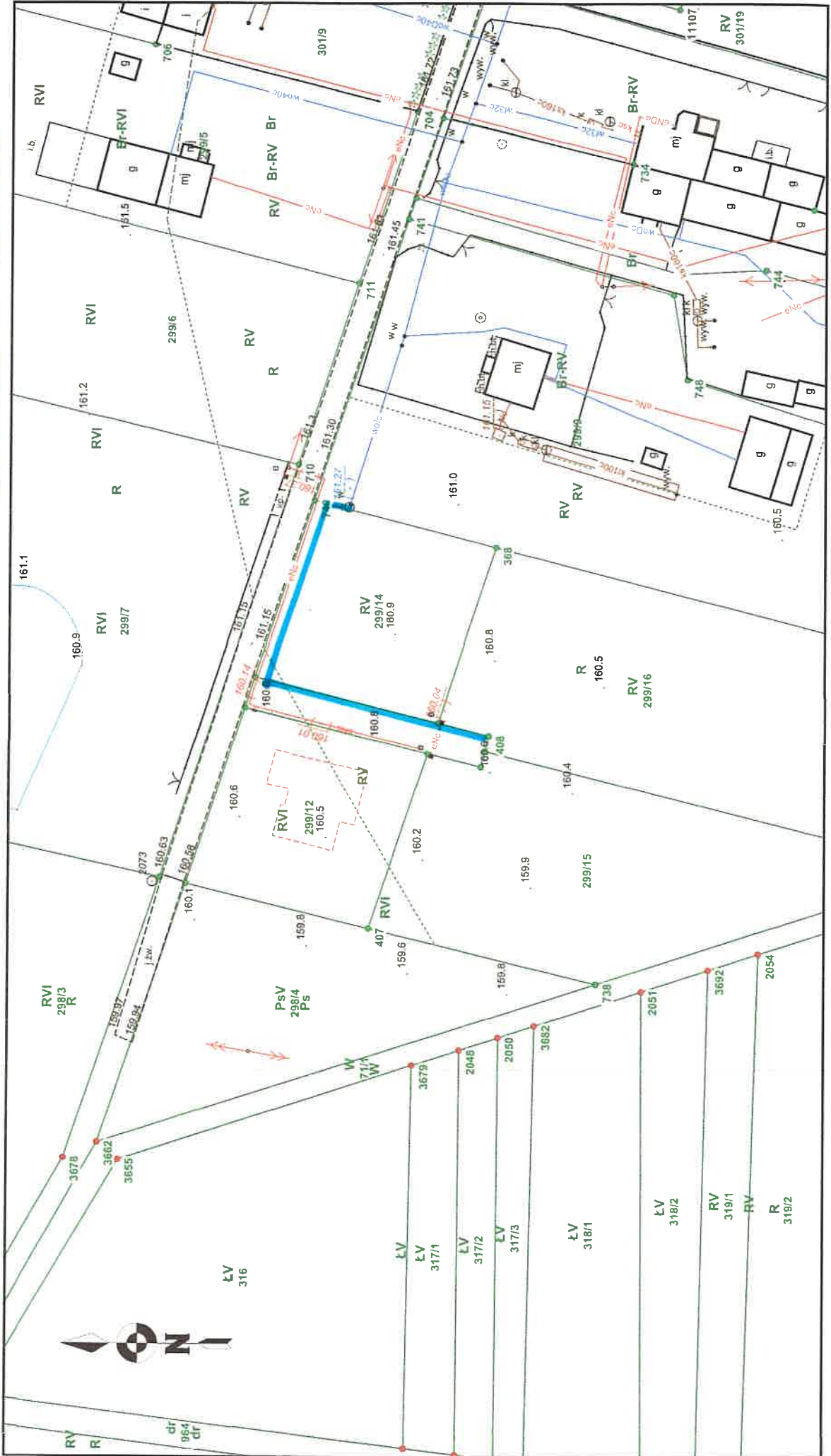


— dt. 120 m.

# Mapa

Skala 1:1000

Zachemie 5-swider

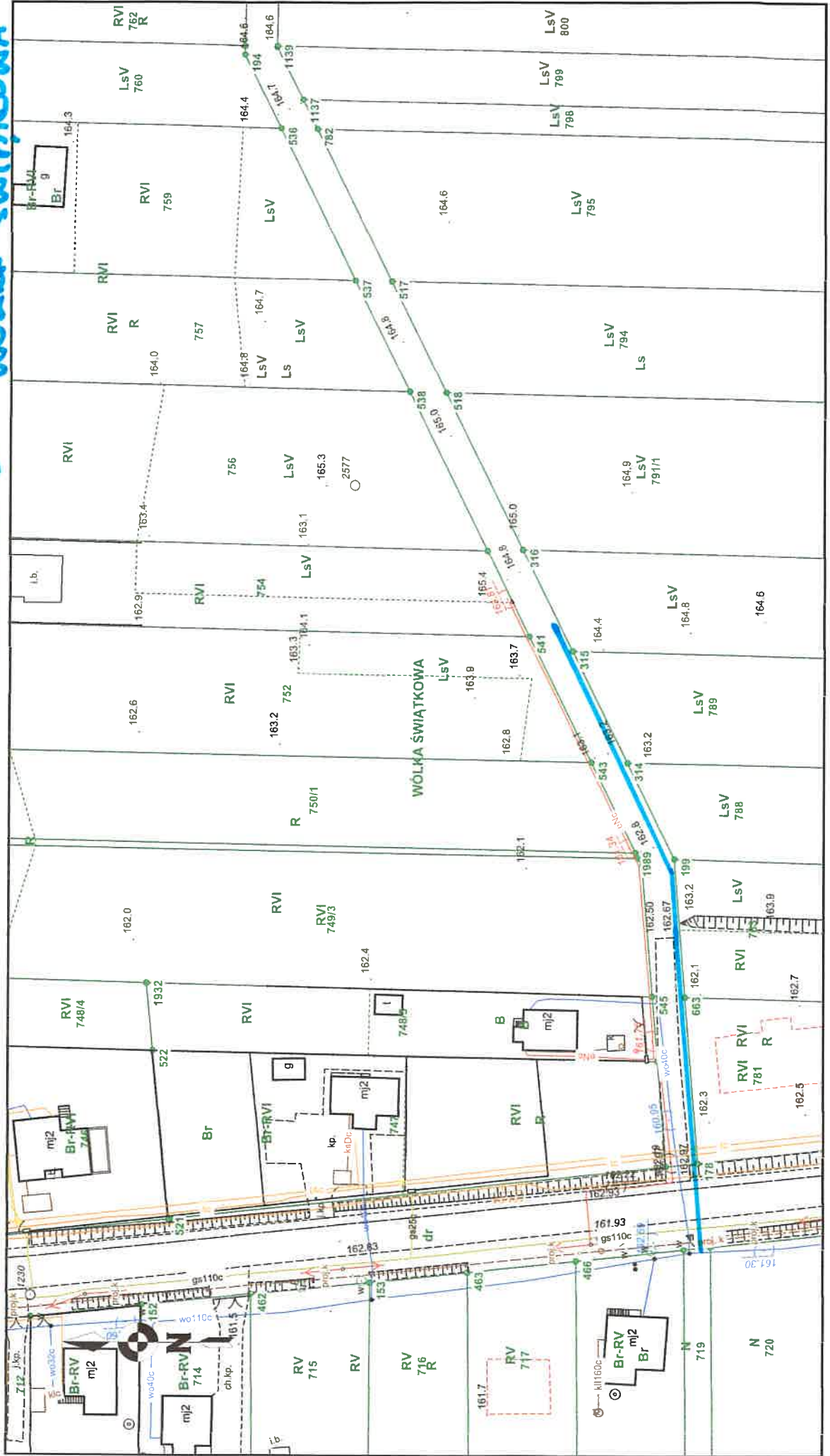


— dk. 75m

Mapa

Skala 1:1000

Zalanie 6 - Wólka Świątkowa

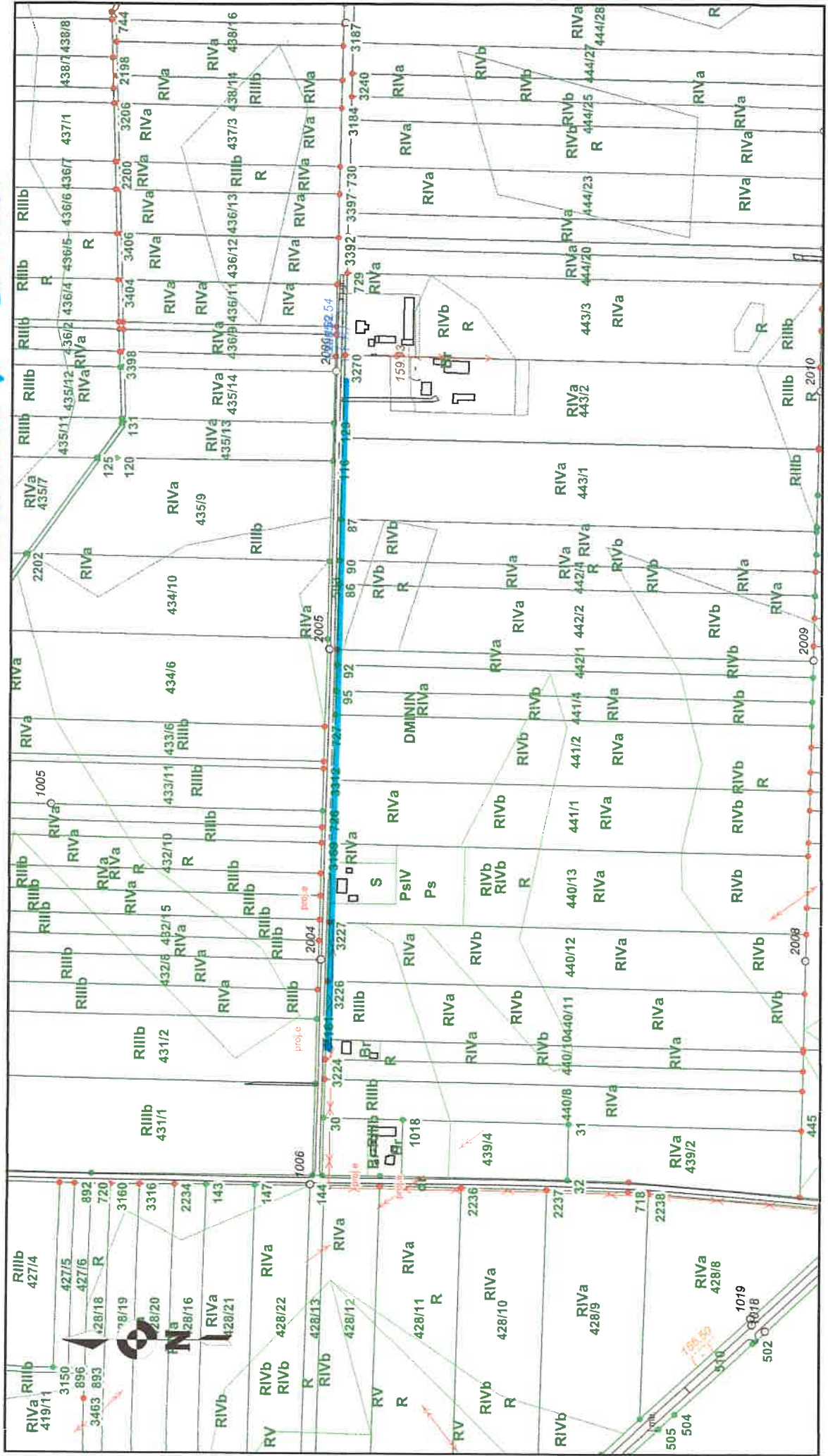


— dt. 120m.

Mapa

Skala 1:5000

*Sedonic 7 - DMINN*

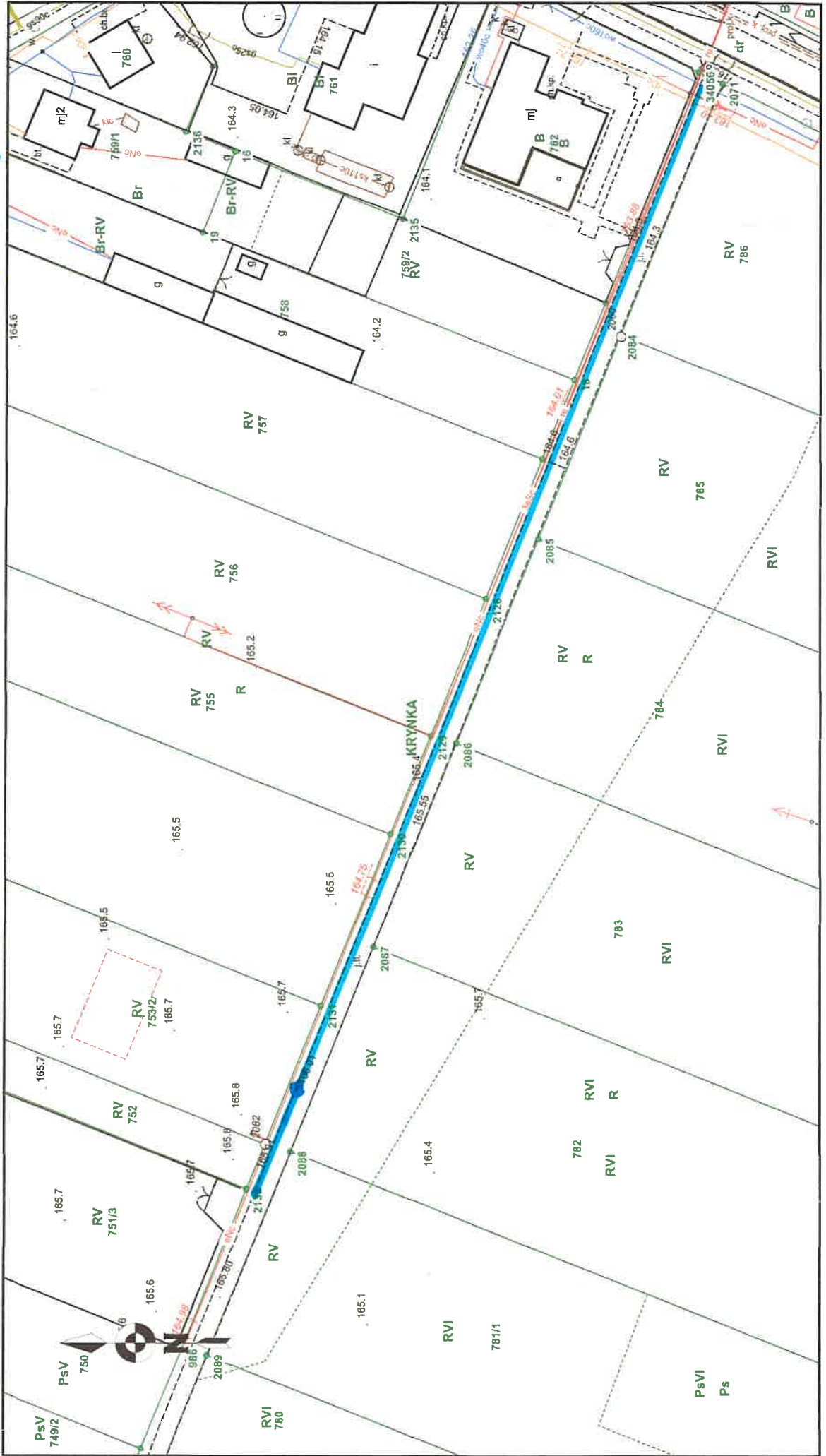


*— dt. 575 m*

Mapa

Skala 1:1000

Radnici 8 - KRYNKA



— d. 225 m



Mapa

Skala 1:1000

Zadanie 9 - KRYNKA



— otk. 220m.